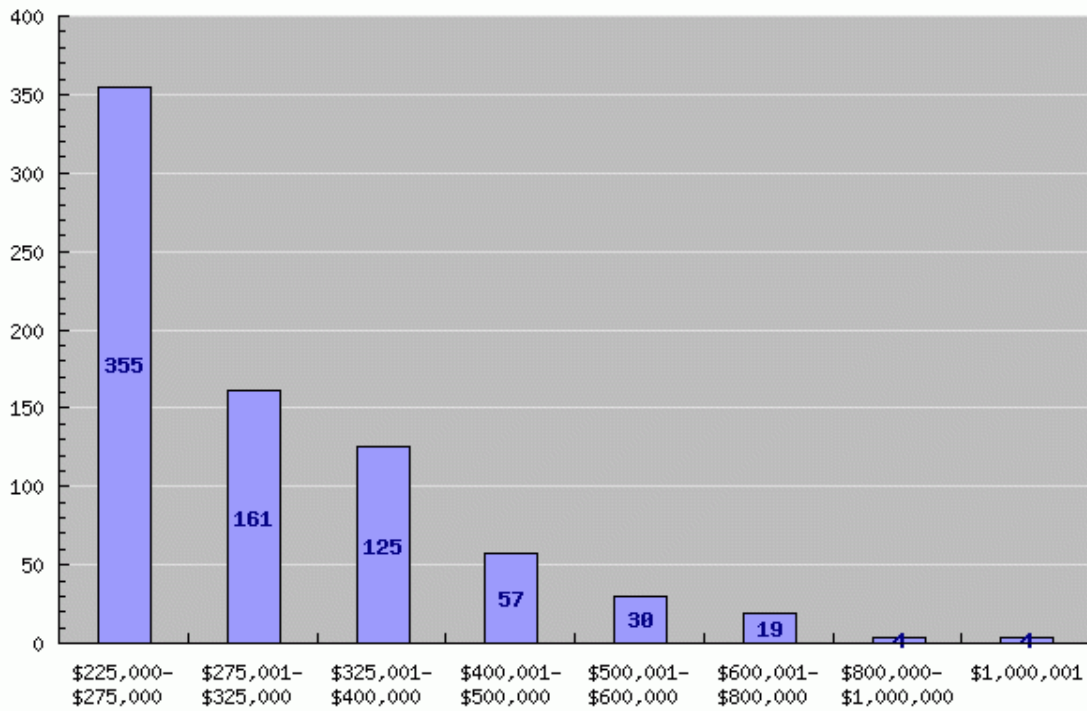


2007

## Number of Real Buyers

Jan 1, 2007 - Dec 31, 2007



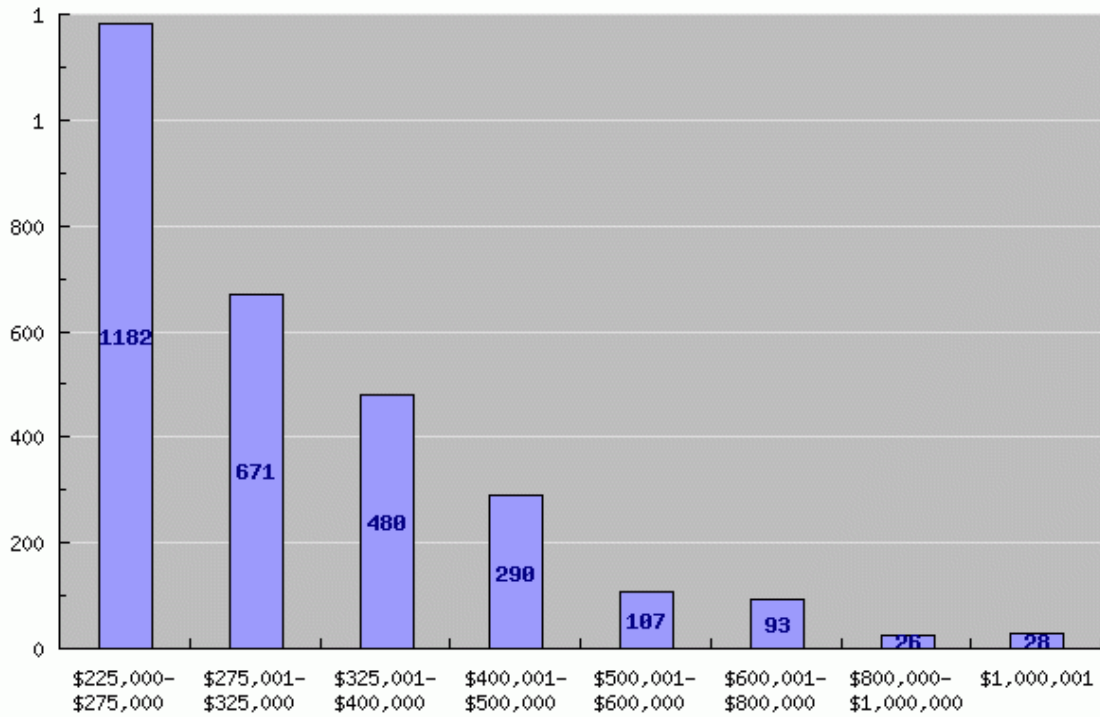
Victoria Luhring  
The Executive Home Team



This is the number of actual sales in each price range.

# 2007

## Current Listings Jan 1, 2007 - Dec 31, 2007



Victoria Luhring  
The Executive Home Team



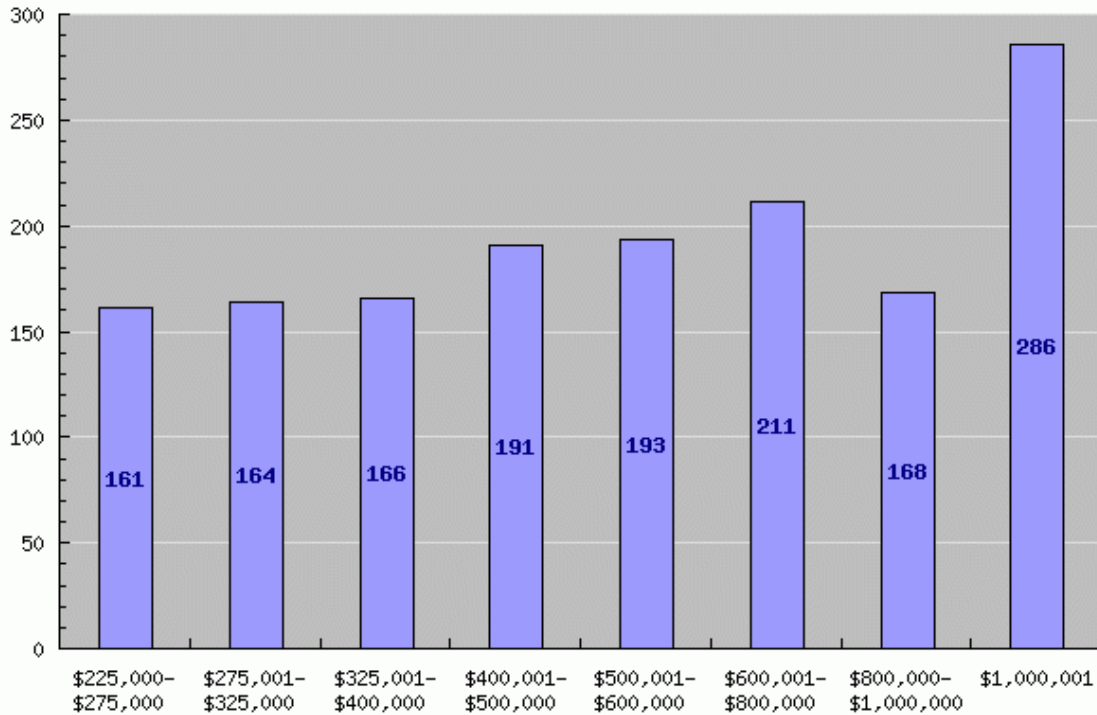
This is the total number of listings from 2007.

These numbers could include re-lists.

2007

## Average Days on Market

Jan 1, 2007 - Dec 31, 2007



Victoria Luhring  
The Executive Home Team

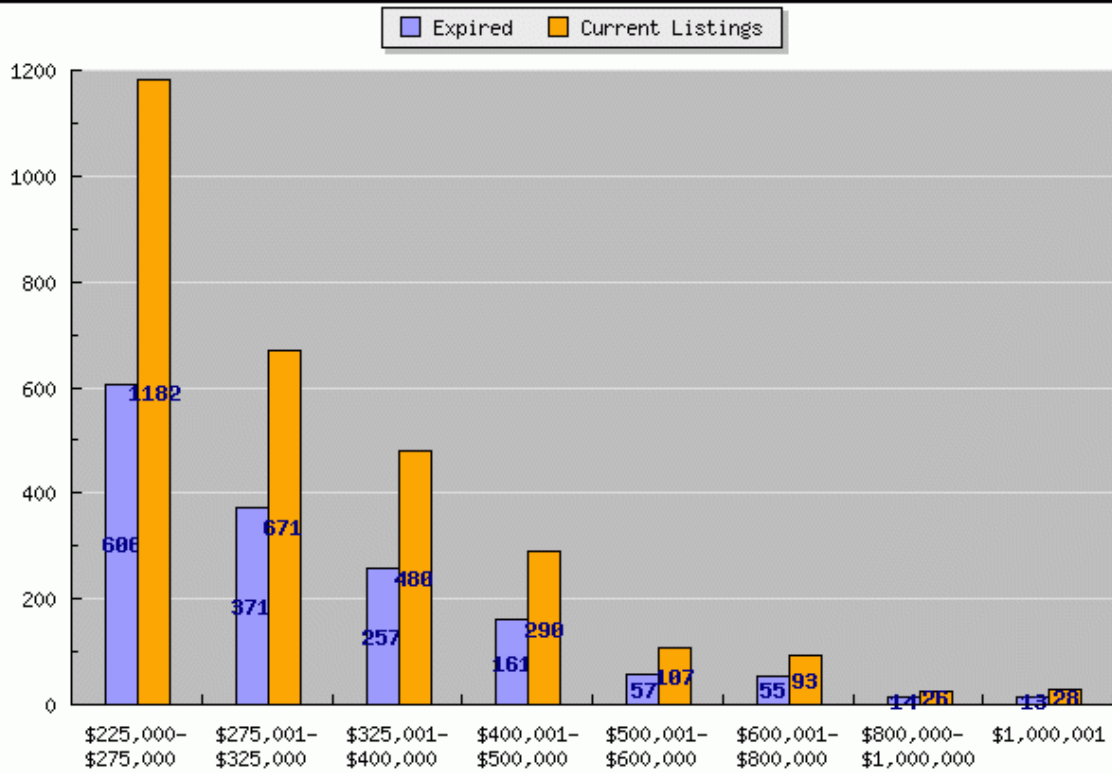


These numbers do not consider properties that have expired and re-listed in the same time period.

# 2007

## Expired to Current Listings

Jan 1, 2007 - Dec 31, 2007



Victoria Luhring  
The Executive Home Team

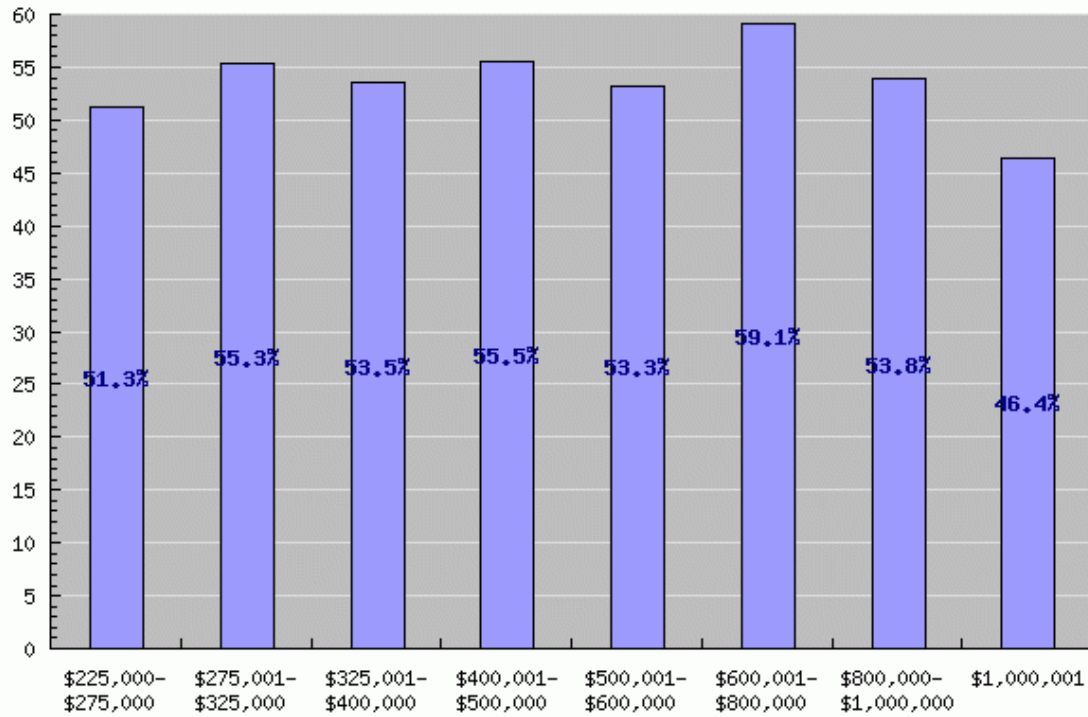


This is the number of expired listings to the total listings from 2007.

2007

## Expired to Current Listings (%)

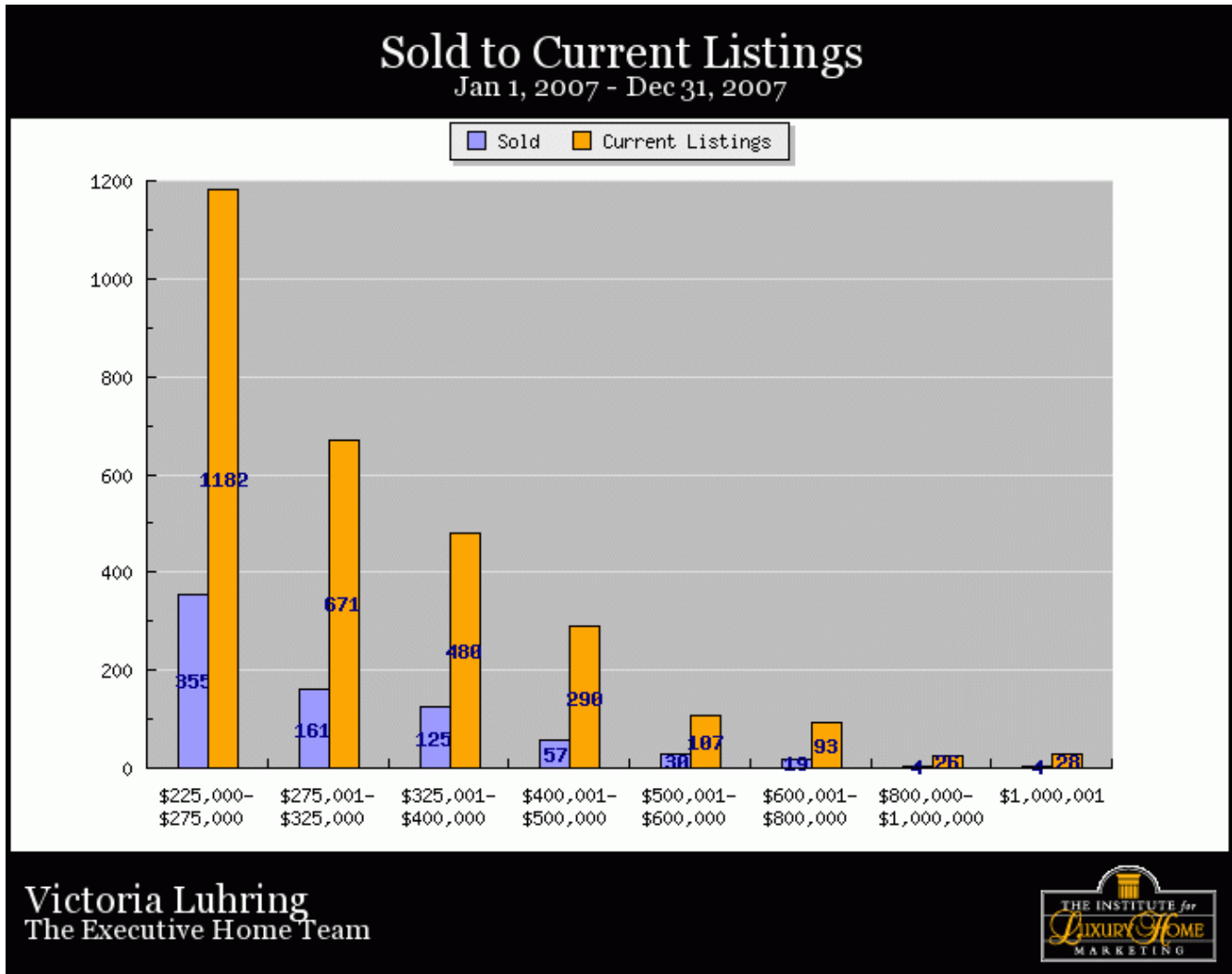
Jan 1, 2007 - Dec 31, 2007



Victoria Luhring  
The Executive Home Team



# 2007

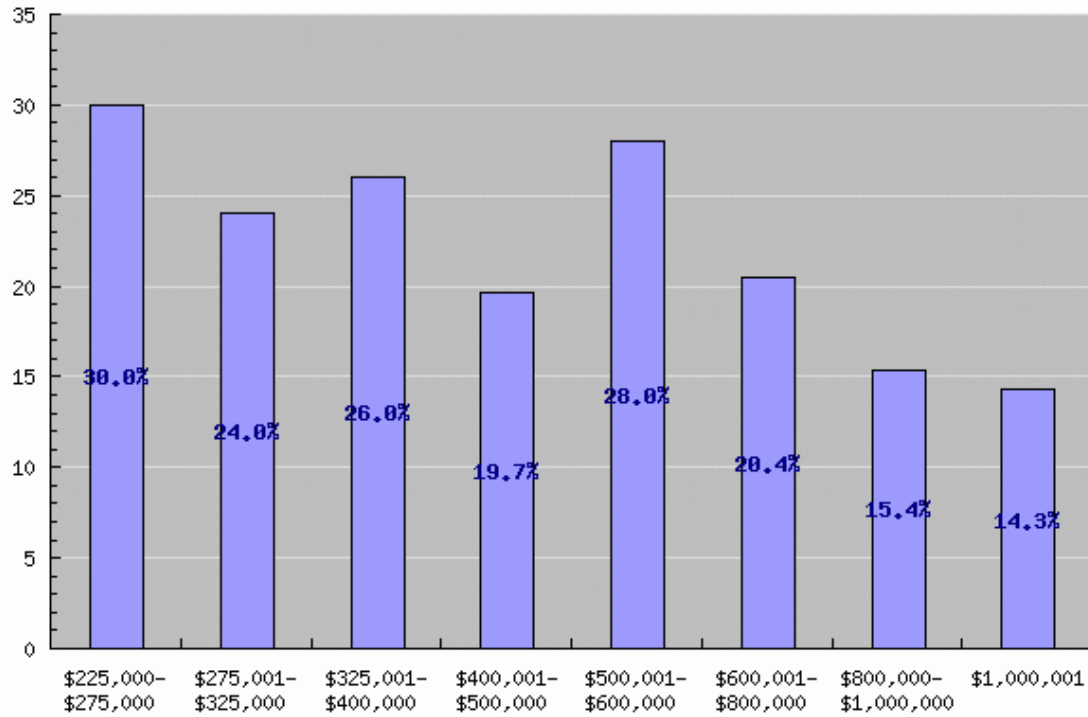


This is the number of sold listings to the total number of listings from 2007.

2007

## Sold to Current Listings (%)

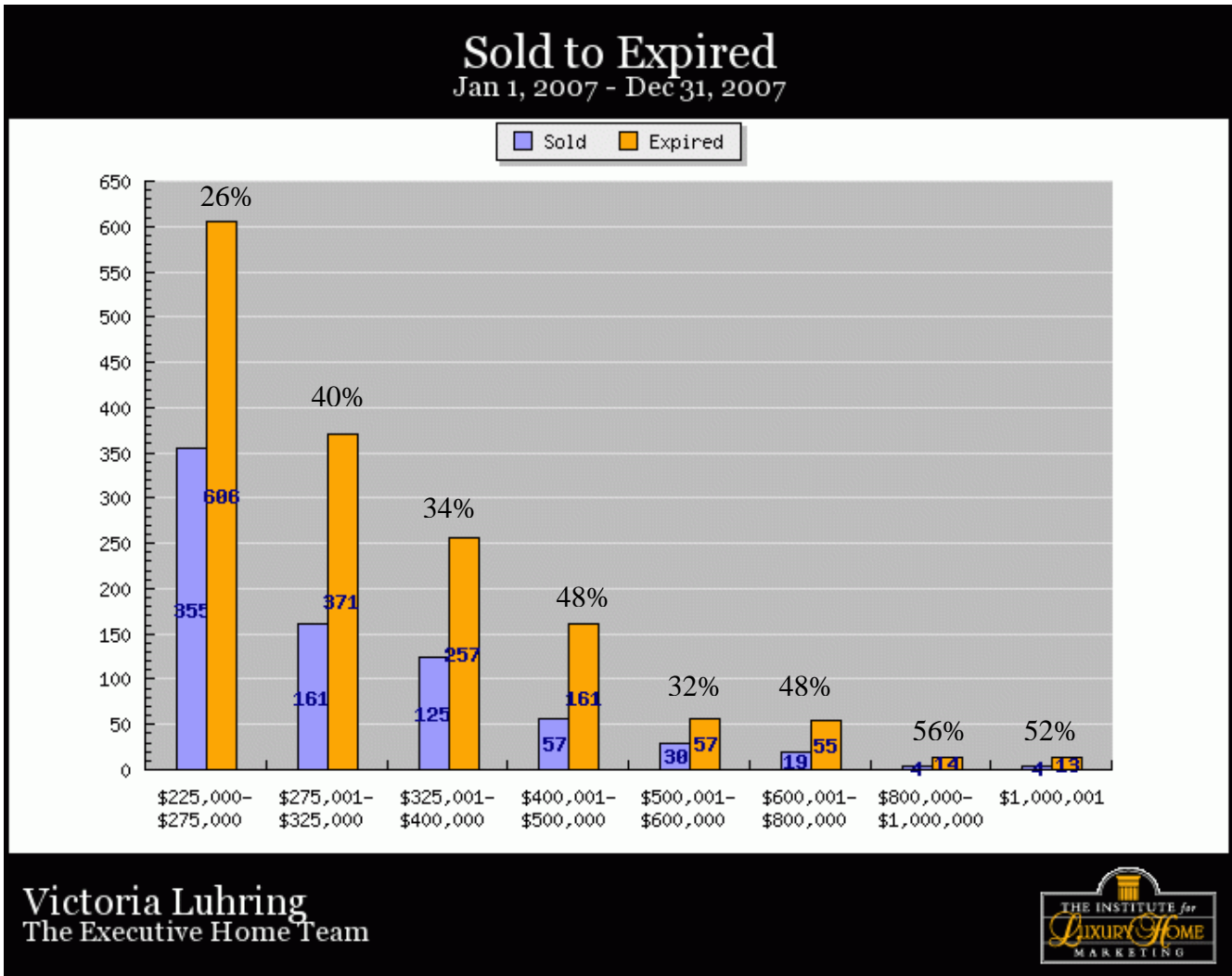
Jan 1, 2007 - Dec 31, 2007



Victoria Luhring  
The Executive Home Team



# 2007



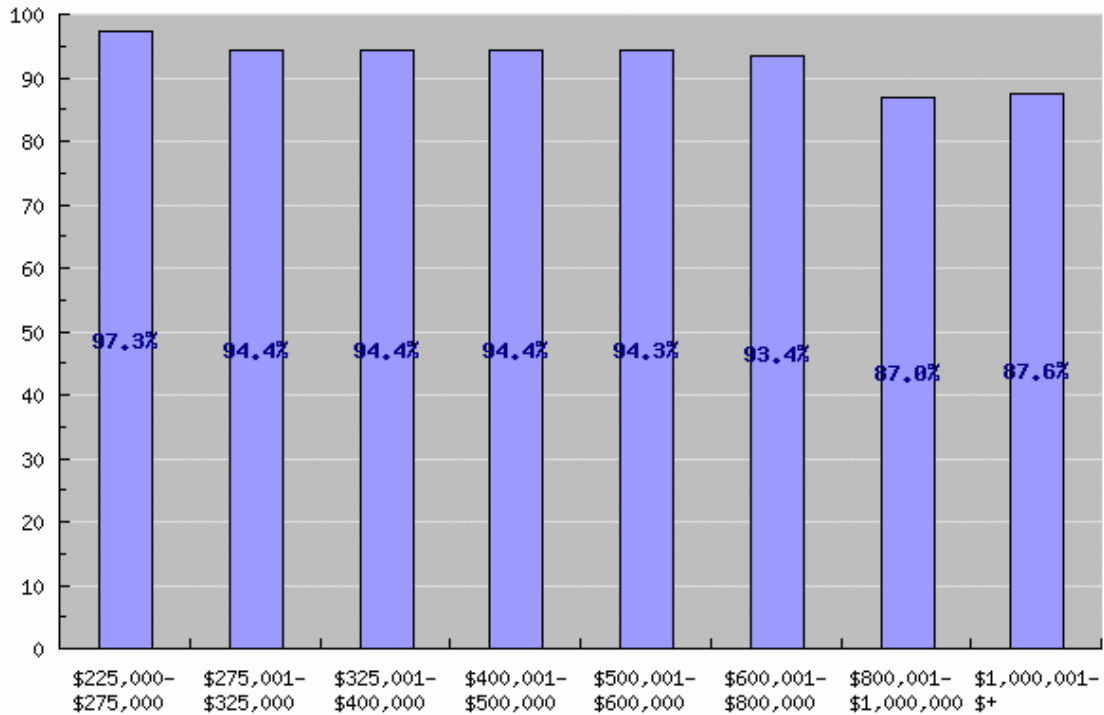
This is the number of solds to the number of expireds.

The percentages represent the greater chance that your house will expire rather than sell.

2007

## Sales Price as Percentage of List Price

Jan 1, 2007 - Dec 31, 2007



Victoria Luhring  
The Executive Home Team



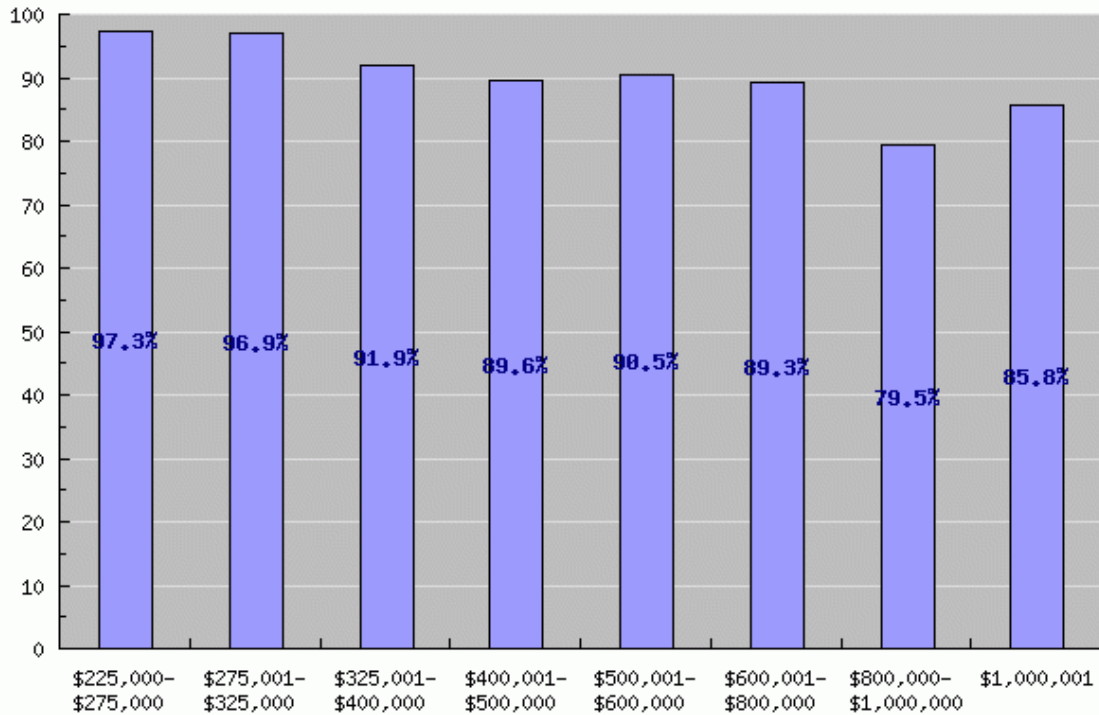
This is the average sales price as a percentage of the average listing price for each price range.

This graph only represents listings for the year 2007. It does not consider the original listing price.

# 2007

## Sales Price as Percentage of List Price

Jan 1, 2007 - Dec 31, 2007



Victoria Luhring  
The Executive Home Team



This graph does consider the original listing price.