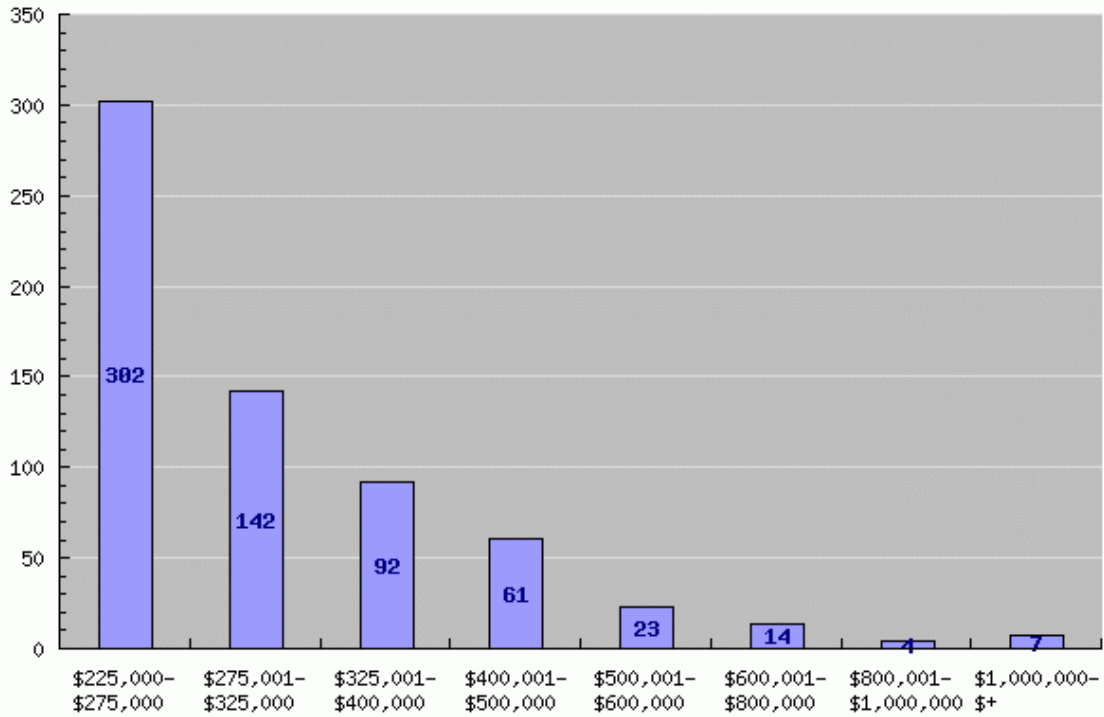


2008

Number of Real Buyers

Jan 1, 2008 - Dec 31, 2008



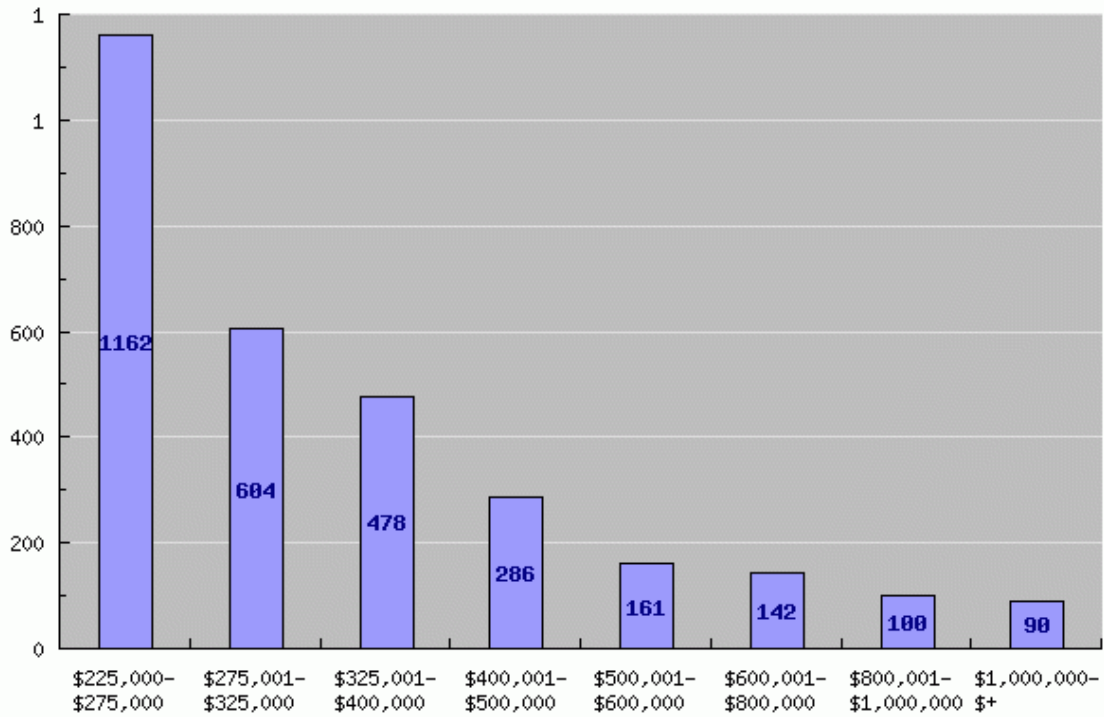
Victoria Luhning



This is the number of actual sales in each price range.

2008

Current Listings Jan 1, 2008 - Dec 31, 2008



Victoria Luhring



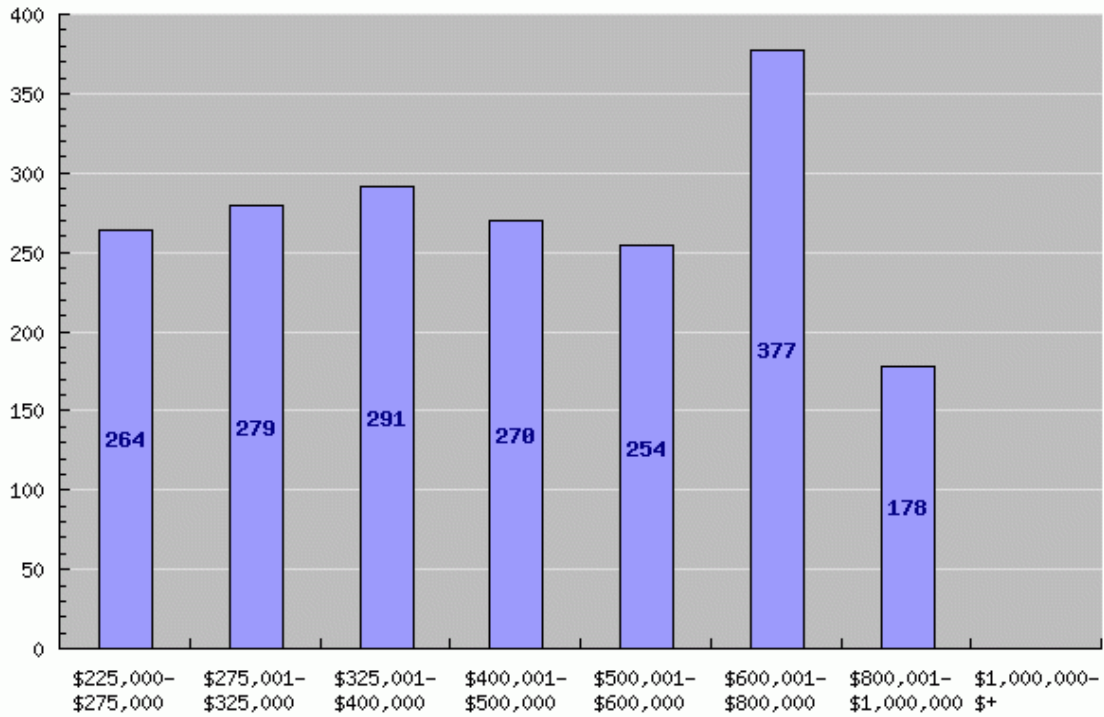
This is the total number of listings for the year 2008.

These numbers include re-lists.

2008

Average Days on Market

Jan 1, 2008 - Dec 31, 2008



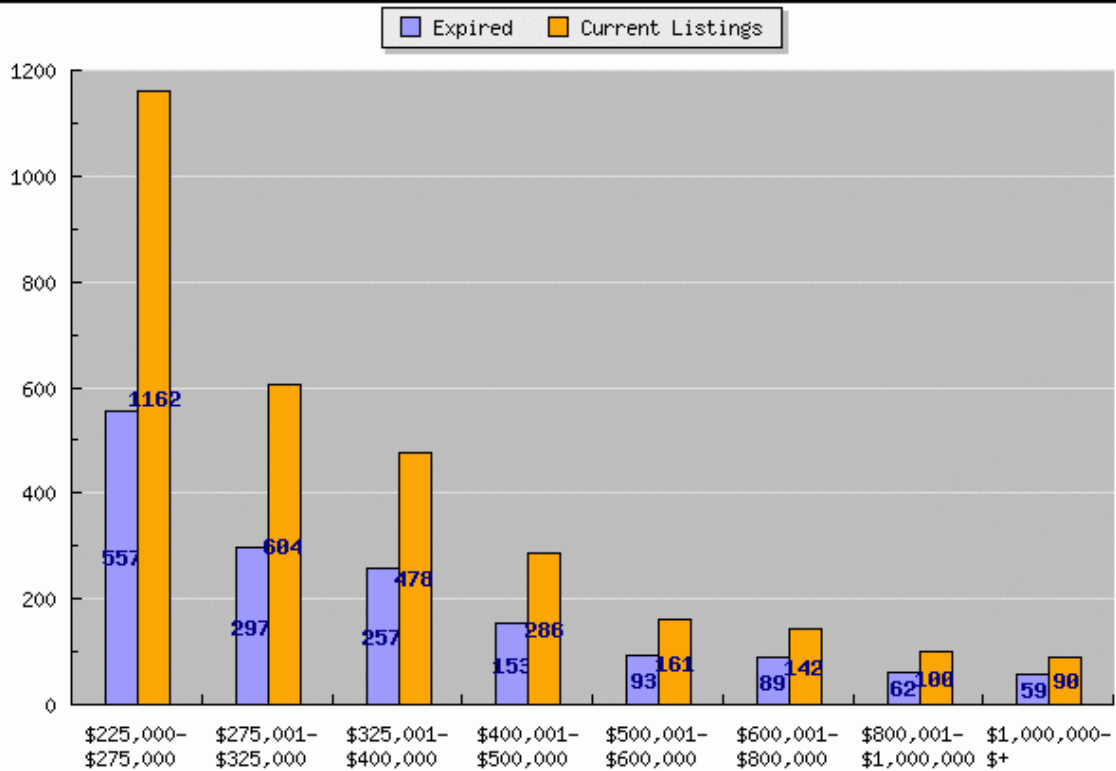
Victoria Luhring



2008

Expired to Current Listings

Jan 1, 2008 - Dec 31, 2008



Victoria Luhning

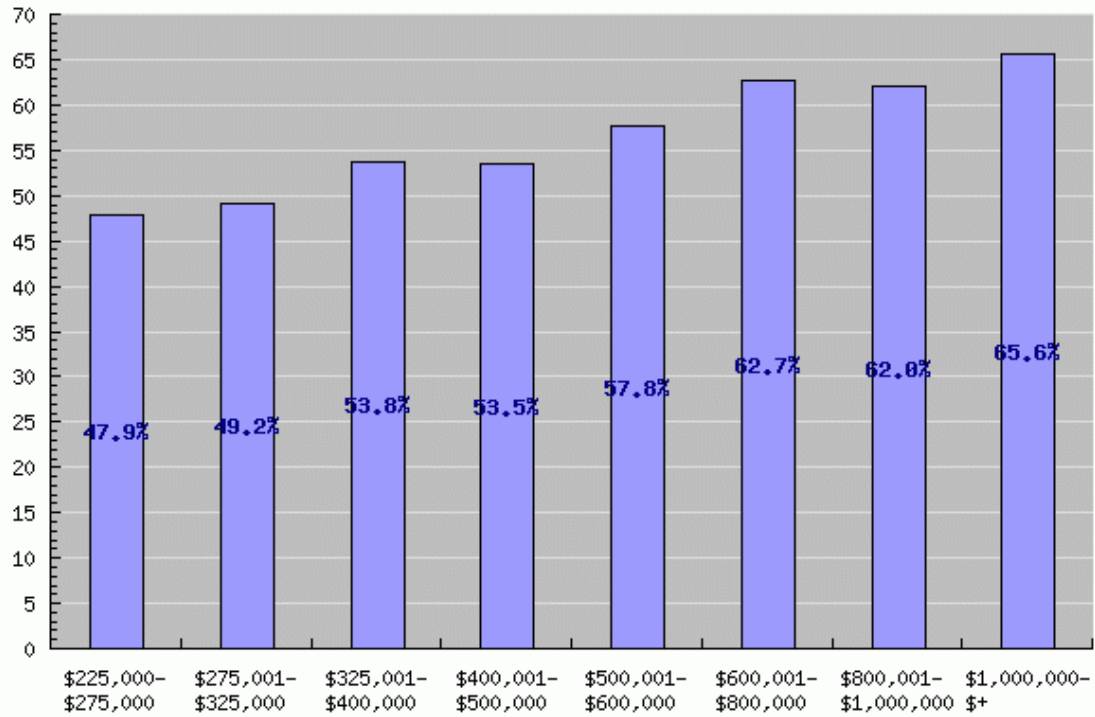


This is the number of expired listings to the total listings for the year 2008.

2008

Expired to Current Listings (%)

Jan 1, 2008 - Dec 31, 2008



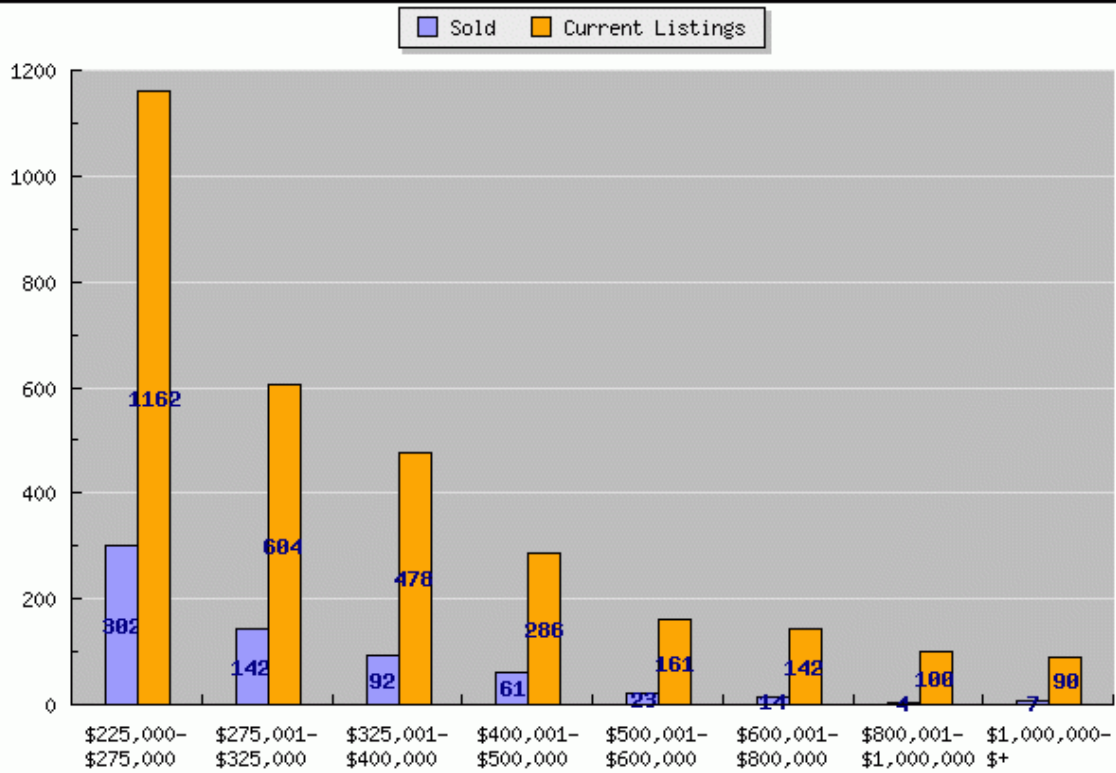
Victoria Luhring



2008

Sold to Current Listings

Jan 1, 2008 - Dec 31, 2008



Victoria Luhring

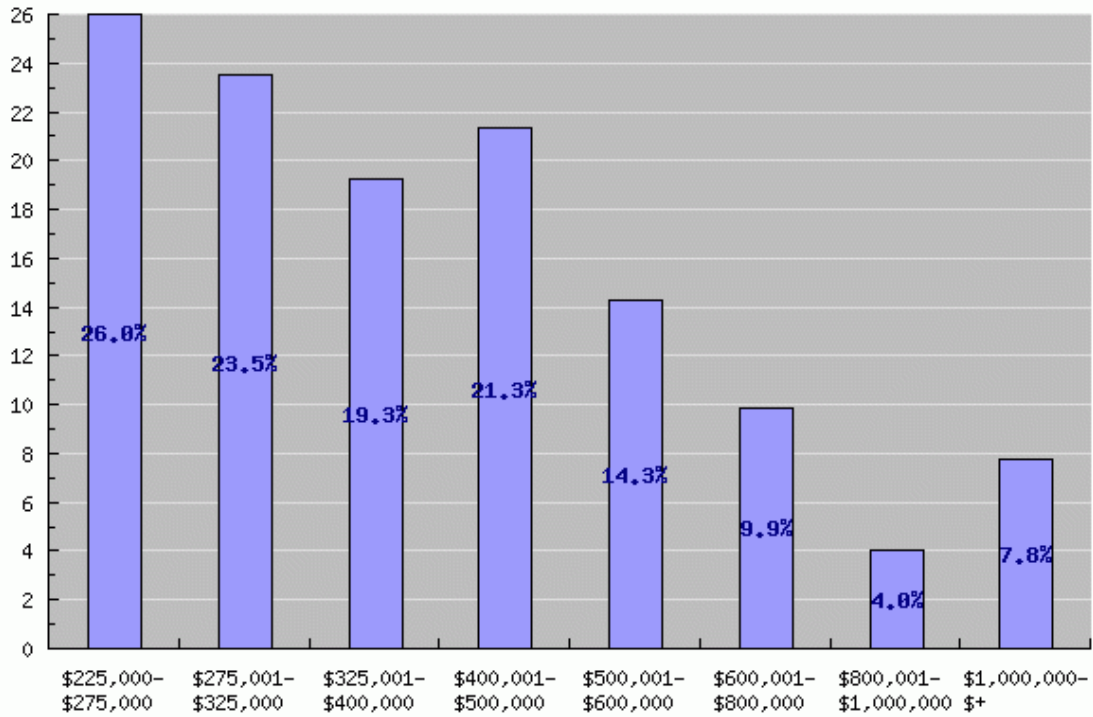


This is the number of sold listings to the total number of listings from the year 2008.

2008

Sold to Current Listings (%)

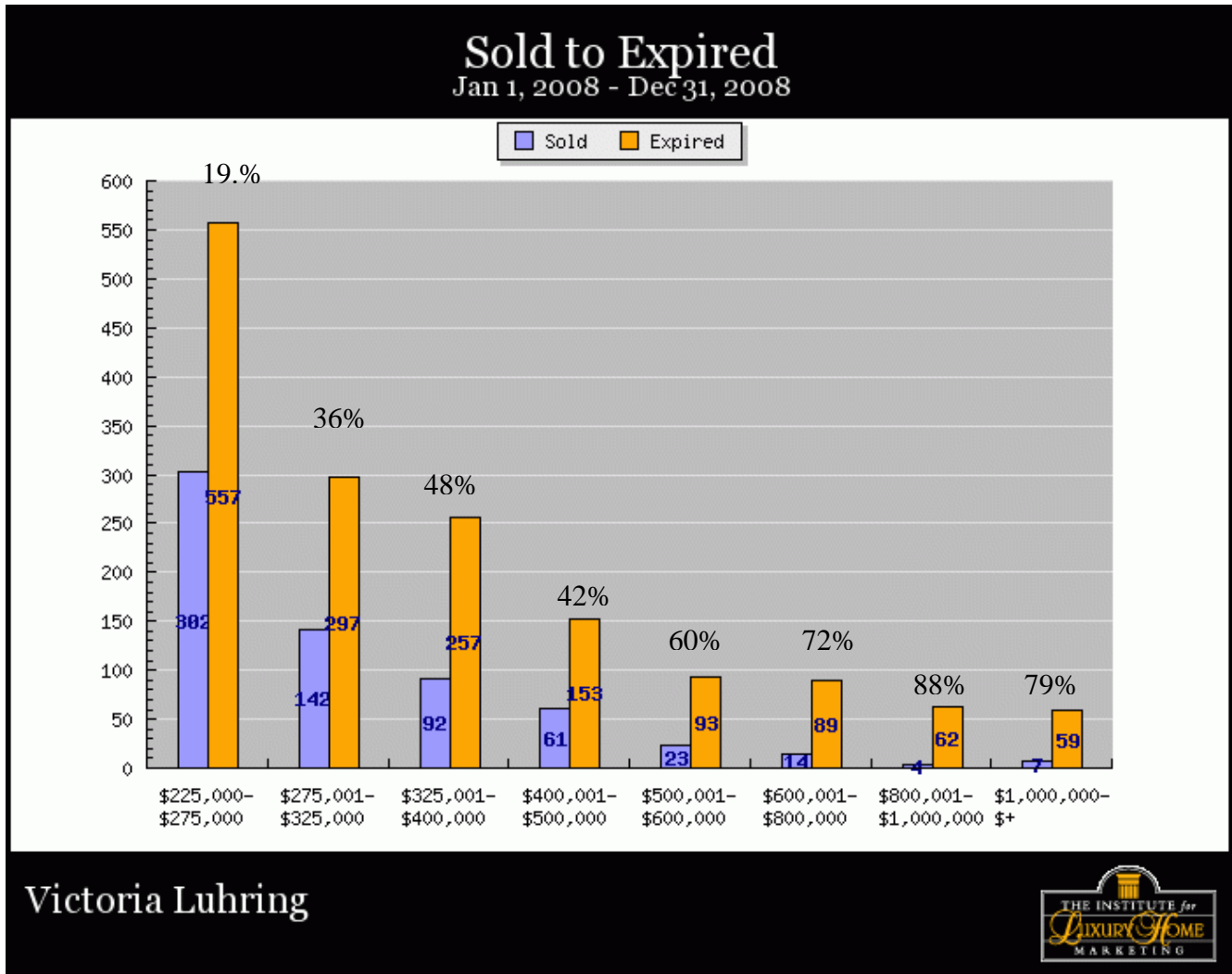
Jan 1, 2008 - Dec 31, 2008



Victoria Luhring



2008

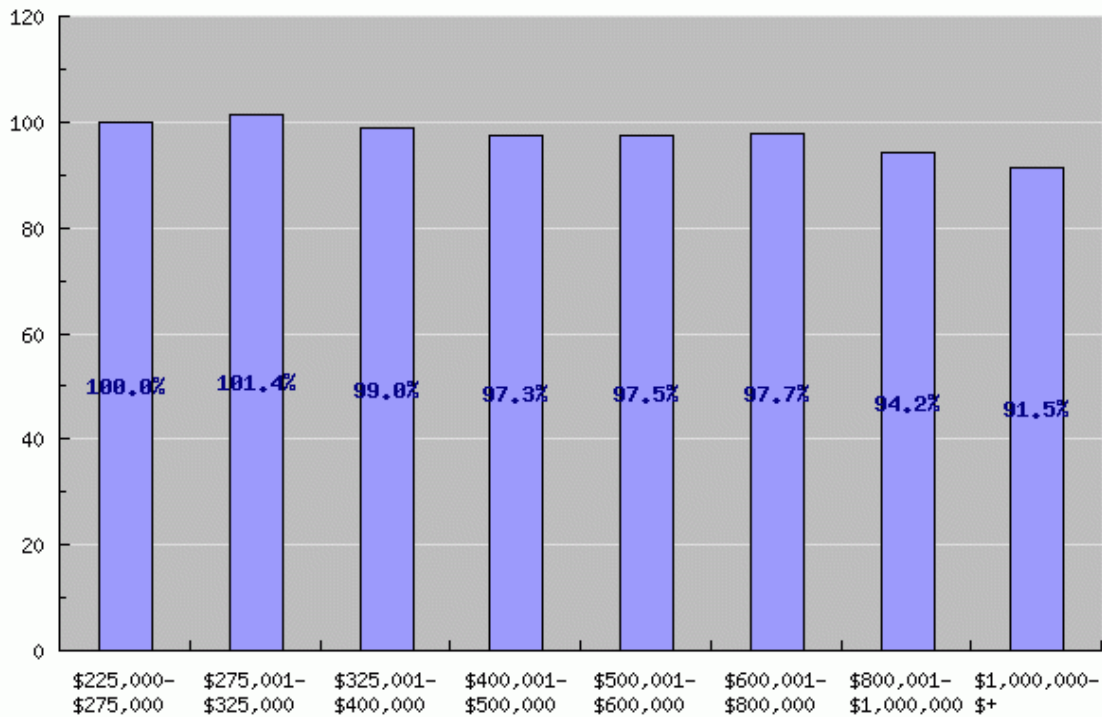


This is the number of solds to the number of expirds.

The percentages represent the greater chance that your house will expire rather than sell.

2008

Sales Price as Percentage of List Price Jan 1, 2008 - Dec 31, 2008



Victoria Luhring



This is the average sales price as a percentage of the average listing price for each price range.

This graph only represents listings for the year 2008. It does not consider the original listing price.