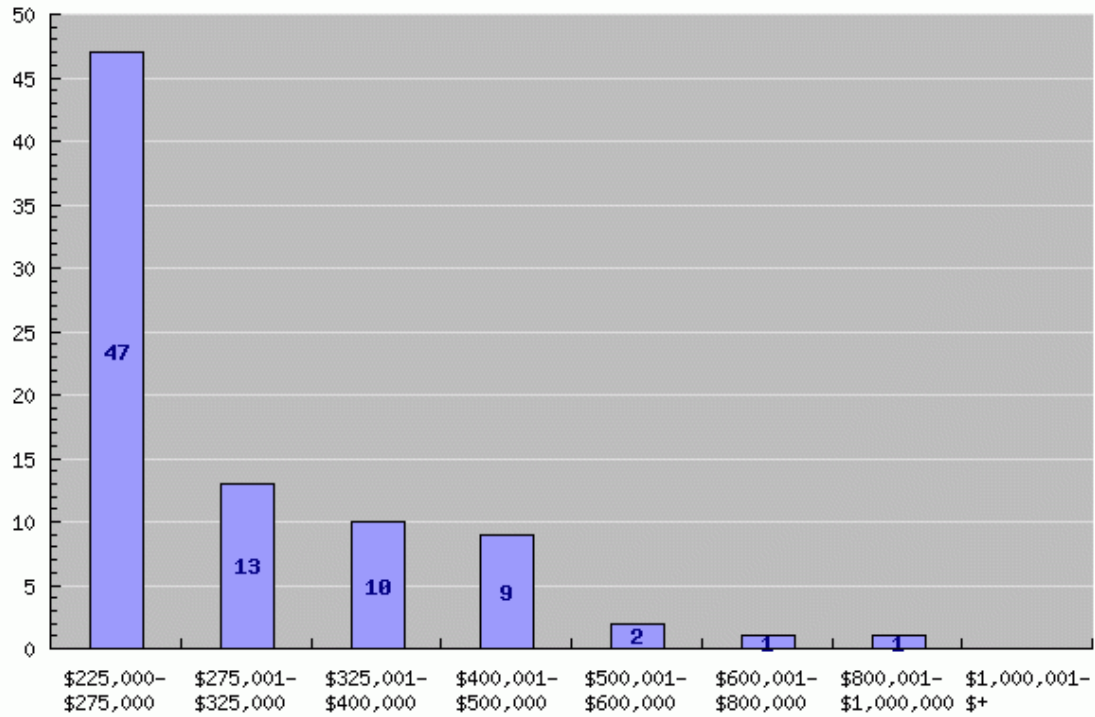


2009

Number of Real Buyers

Jan 1, 2009 - Mar 31, 2009



Victoria Luhring

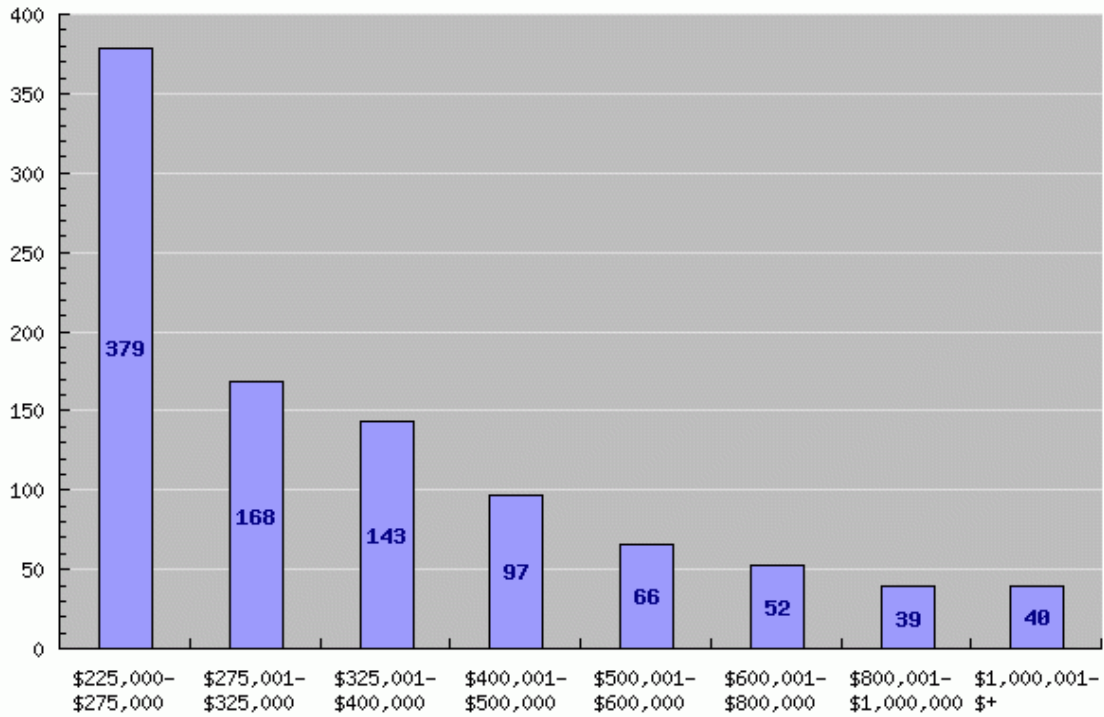


This is the number of actual sales in each price range.

2009

Current Listings

Jan 1, 2009 - Mar 31, 2009



Victoria Luhring



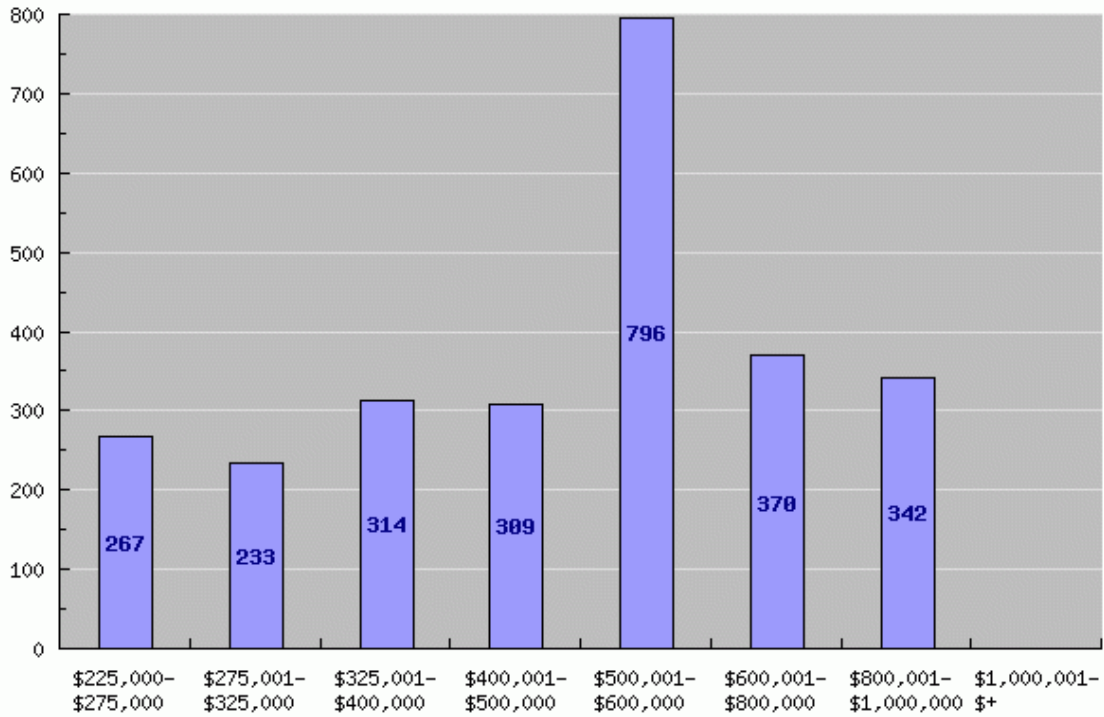
This is the total number of listings from the first quarter of 2009.

These numbers include re-lists.

2009

Average Days on Market

Jan 1, 2009 - Mar 31, 2009



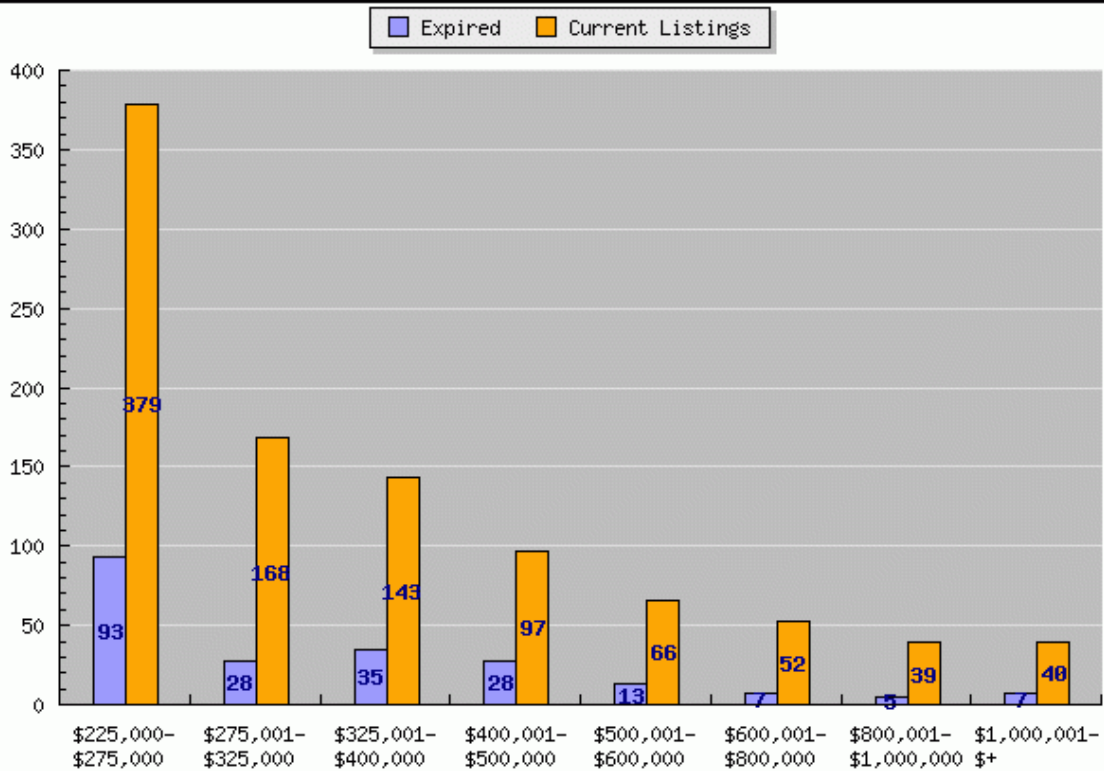
Victoria Luhring



2009

Expired to Current Listings

Jan 1, 2009 - Mar 31, 2009



Victoria Luhning

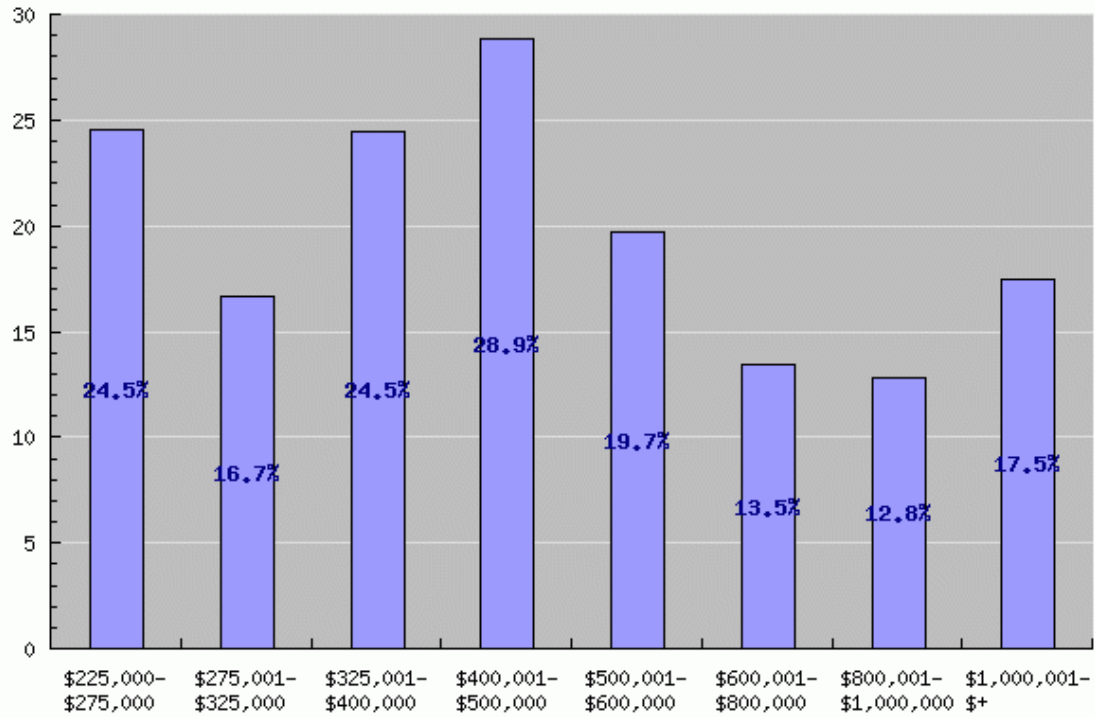


This is the number of expired listings to the total listings for the first quarter of 2009.

2009

Expired to Current Listings (%)

Jan 1, 2009 - Mar 31, 2009



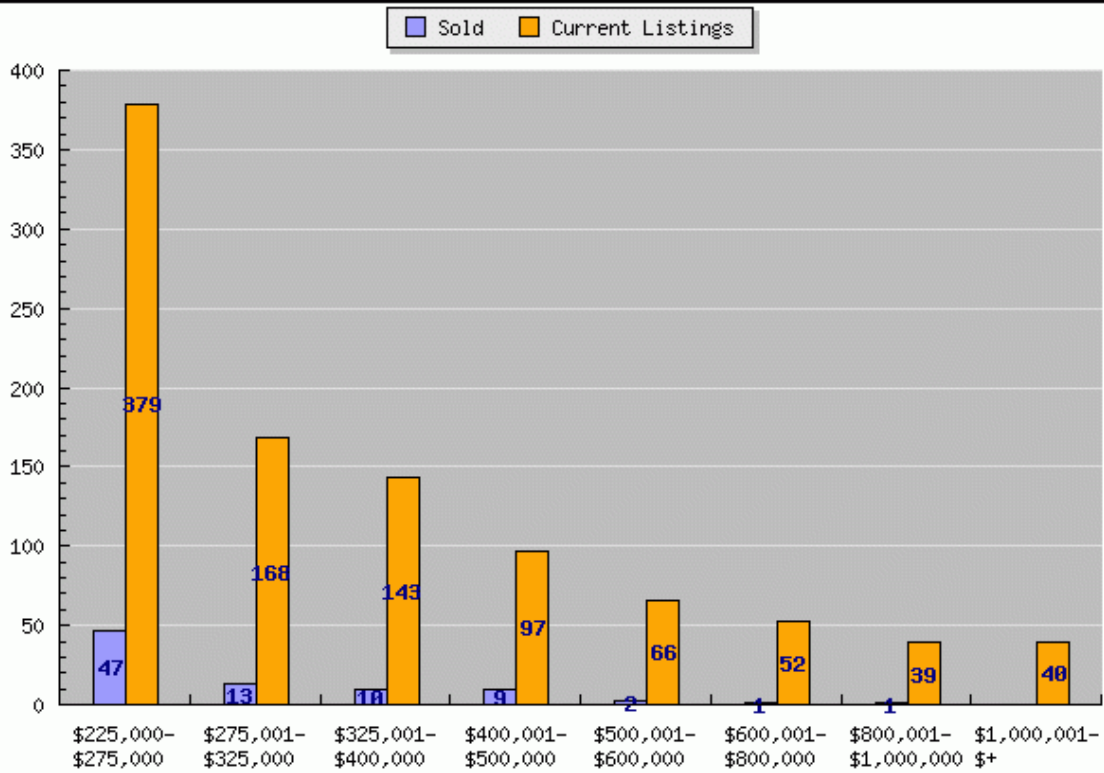
Victoria Luhring



2009

Sold to Current Listings

Jan 1, 2009 - Mar 31, 2009



Victoria Luhning

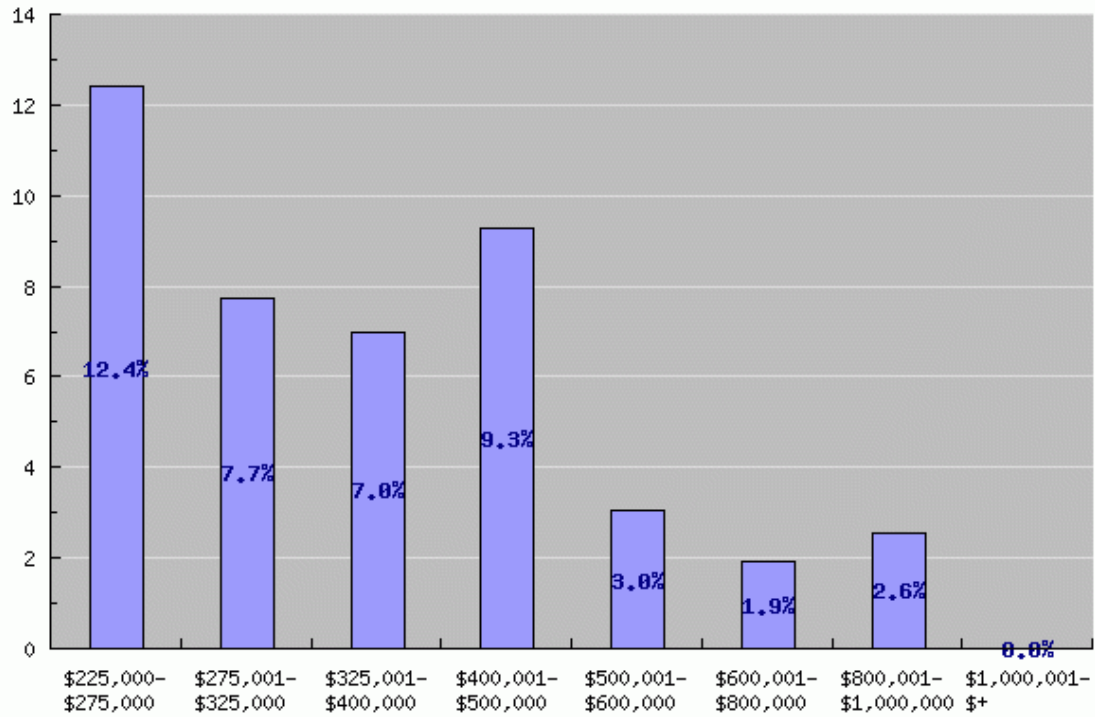


This is the number of sold listings to the total number of listings for the first quarter of 2009.

2009

Sold to Current Listings (%)

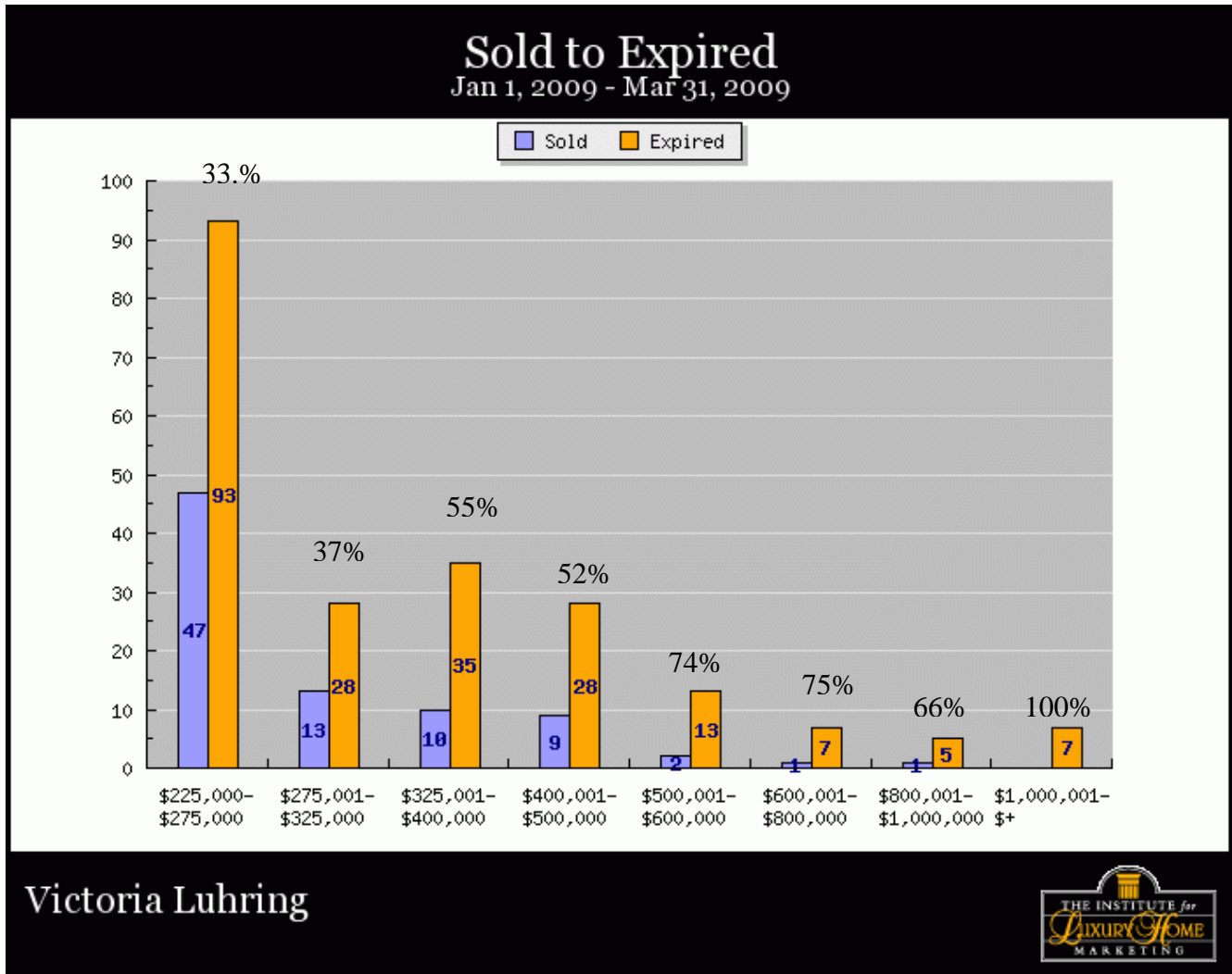
Jan 1, 2009 - Mar 31, 2009



Victoria Luhring



2009



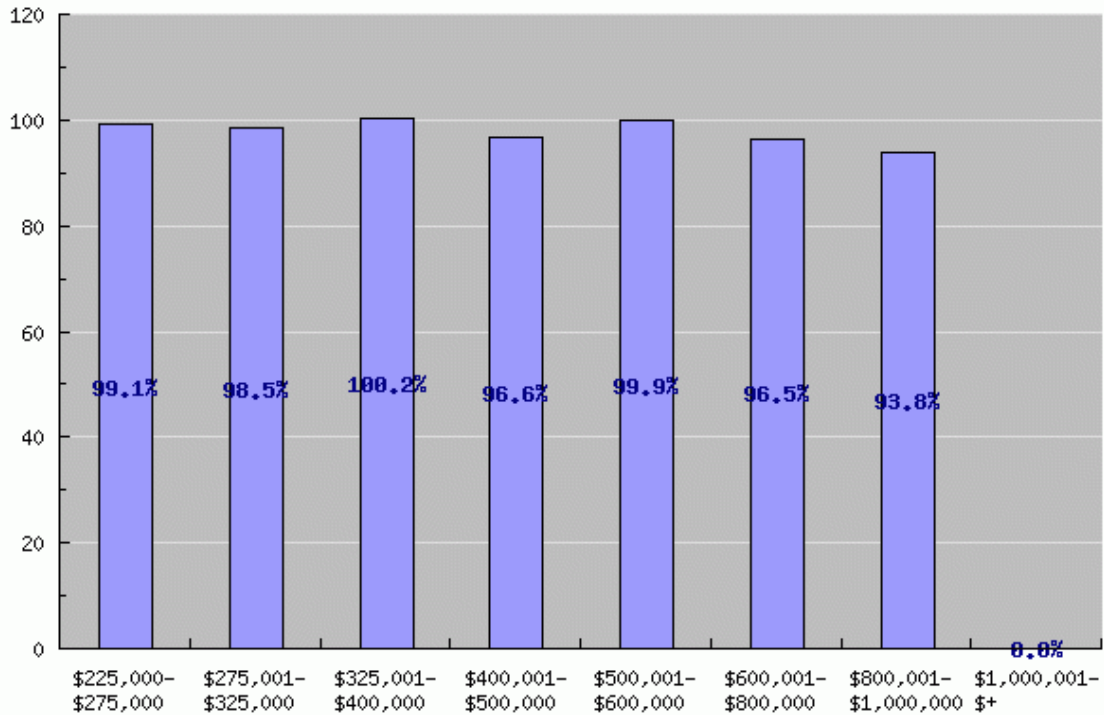
This is the number of solds to the number of expireds.

The percentages represent the greater chance that your house will expire rather than sell.

2009

Sales Price as Percentage of List Price

Jan 1, 2009 - Mar 31, 2009



Victoria Luhning



This is the average sales price as a percentage of the average listing price for each price range.

This graph only represents listings for the first quarter of 2009. It does not consider the original listing price.